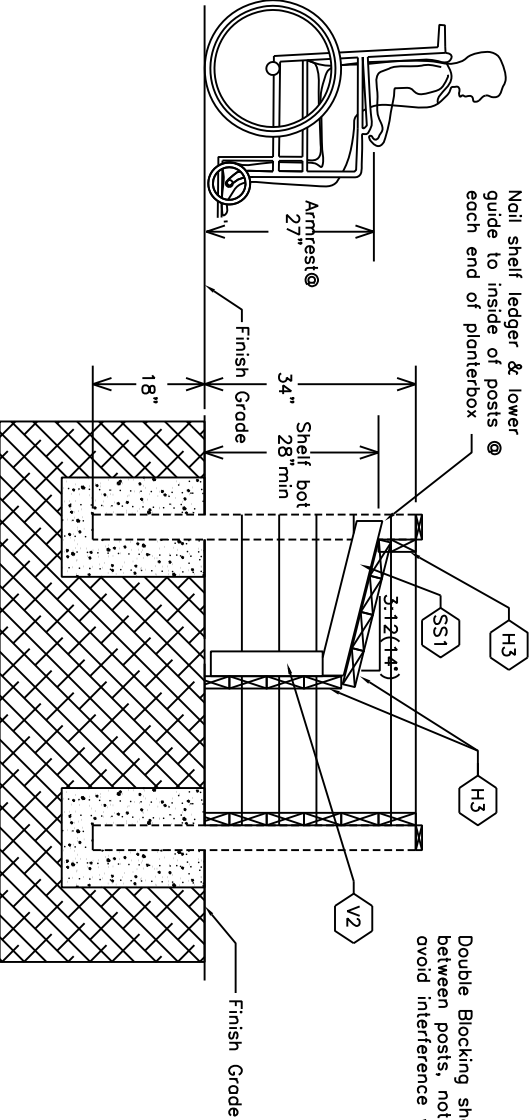
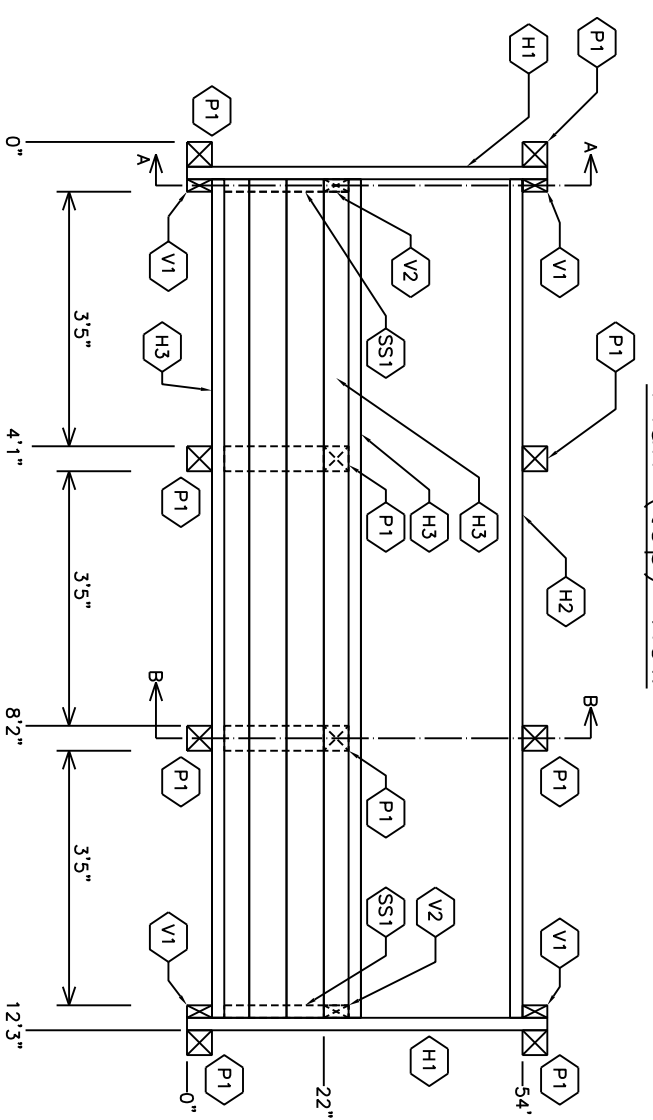
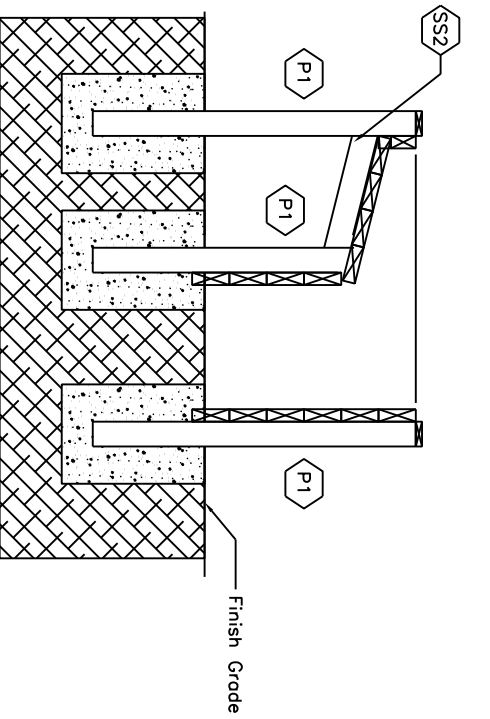


Plan (top) View



Section A-A (at ends)

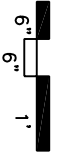


Section B-B (center posts)

SYM	Name	Size	Len	Qty
P1	Post	4x4	5'0"	5 4x4@10' (cut in half)
H1	End Planter Board	2x6	5'	6 2x6x10' (cut in half)
V1	Vertical Bolt	2x4	3'	2 2x4x6' (cut in half)
H2	Back Planter Board	2x6	12'	6
SS1	Shell Support Ledger	2x4	3'	3 2x4x6' (SS1,SS2,V2)
V2	Vertical Bolt	2x4	2'	see SS1
SS2	Shell support Blkg	2x4	3'	see SS1
H3	Shell Planter Board	2x6	12'	9 2x6x12'
CONC	Fence Post Concrete	60lb		6 sacks
TREX	Top Cap Trex	1x6		3 1x6x12'
PMIX	Garden Planterbox Mix			3 cubic yards

Recommended Assembly Order

- CONC P1** Install 10 corner and inside posts per dimensions shown
- H1** Install end walls (2x6), starting at top row
- V1 H2 H3** Install vertical bolts, then install back wall 2x4 vertical Bolt & 2x6 Planter Boards starting at top
- SS1 V2 H3** Install ledgers on inside ends, install front planter board, then install planter boards on shelf and inside posts
- SS2** Nail double blocking shelf supports (inside post extents)
- PMIX** Fill Planter Box & start gardening! (Note: Might consider leaving back open, filling box and adding 2x6 (H3) as fill height increases)



Garden Box Scale

3-User Wheelchair Planterbox

Revised 4/27/2011 Joy Chesovoge