

Door

GARDEN ROOM

Door

A

LITTLE HOUSE BUTTERFLY GARDEN

1/4" = 1'-0"

SEE PLAN 'B'

STEPPING STONE PATH

WATER FEATURE

Ribes

Sol.

G

G

G

P

P

P

Cal.

AS

AS

Sol.

Cal.

AS

Ribes

G

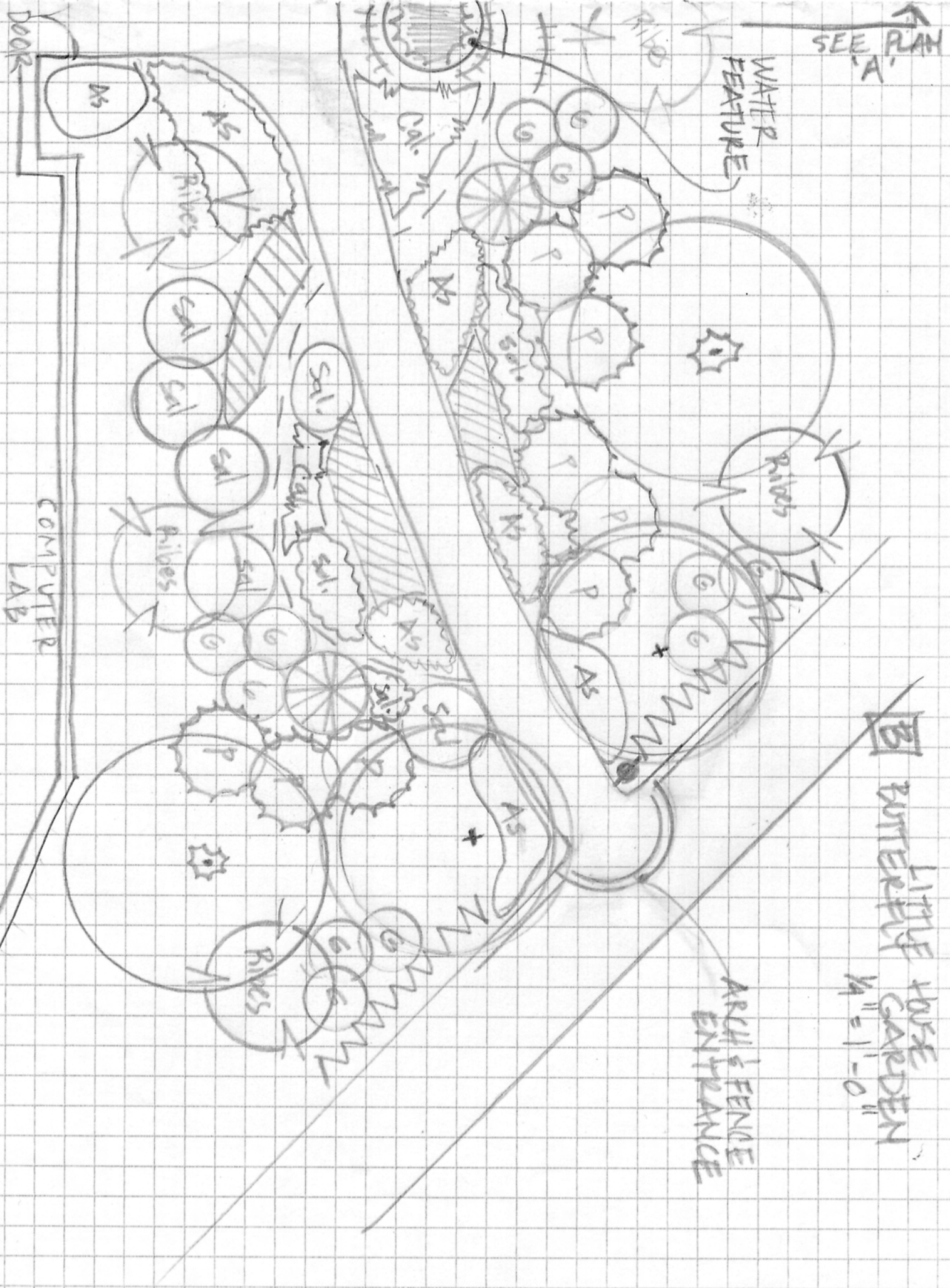
G

SEE PLAN 'A'

WATER FEATURE

ARCH & FENCE ENTRANCE


BUTTERFLY HOUSE GARDEN
4" = 1'-0"

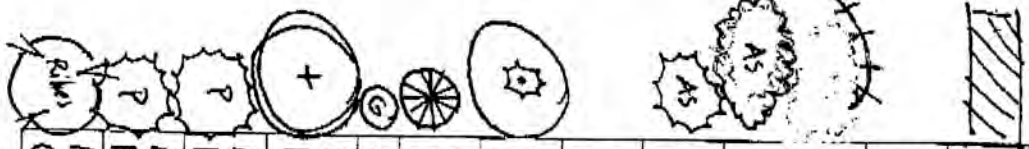


BUTTERFLY GARDEN PLANTS

Little House, Menlo Park
March 2011

March 18, 2011
w/ plant symbols
Jodi Faust

PLANT	QUANTITY	HEIGHT	P/A	BLOOM	C/N	BUTTERFLIES
 <i>Achillea millefolium</i> 'Moonshine'	21	2' x 1'	P	6-9 deep yellow	CN	Mary
<i>Moonshine</i> Yarrow						
<i>Armeria</i>	-	1'		3-5 pink	N	
<i>Asclepias speciosa</i>	8	3'-4'	P	6-9 rosy pink	CN	Monarchs
Showy Milkweed						
<i>Aster x frikartii</i>	20	3' x 2'		6-10 lavender blue	N	
<i>Aster chilensis</i>				8-11 pale lavender	CN	Northern Checkerspot Field Crescent
Common California Aster	15	1' x 3'				
<i>Borago officinalis</i>	-		A	5-9 bright blue	N	
Borage						
<i>Buddleia davidii</i>	5	5'-8'		7 lilac spikes	N	Monarchs
Butterfly Bush	5 gallon					
<i>Carex buchananii</i>	4	3' x 2'		reddish bronze grass		
Leather Leaf Sedge						
<i>Gaura lindheimeri</i>	18	3' x 2'		pink		
Malus 'Royal Fountain'				3-4 dark pink		
Flowering Crabapple	2	15' x 15'		9-11 berries		
<i>Penstemon hybrid</i> 'Midnight'	6	2' x 4'		3-5 dark purple	N	
Midnight Penstemon						
<i>Penstemon spatulifolius</i>	6	3' x 2'		3-5 blue-purple		
Royal Penstemon						
<i>Ribes sanguineum</i>	7	5'		3-5 dark pink	C	
Currant						



*Quantities are for 1 gallon size cans, except as noted.

Compiled by C. Burgdorf
2011

Updated: Mar 1,

